

MONTHLY MEMBERSHIP PROGRESS REPORT

District 19 O

Results as of: 6/30/2024

GMT:

LOCATION BRITISH COLUMBIA

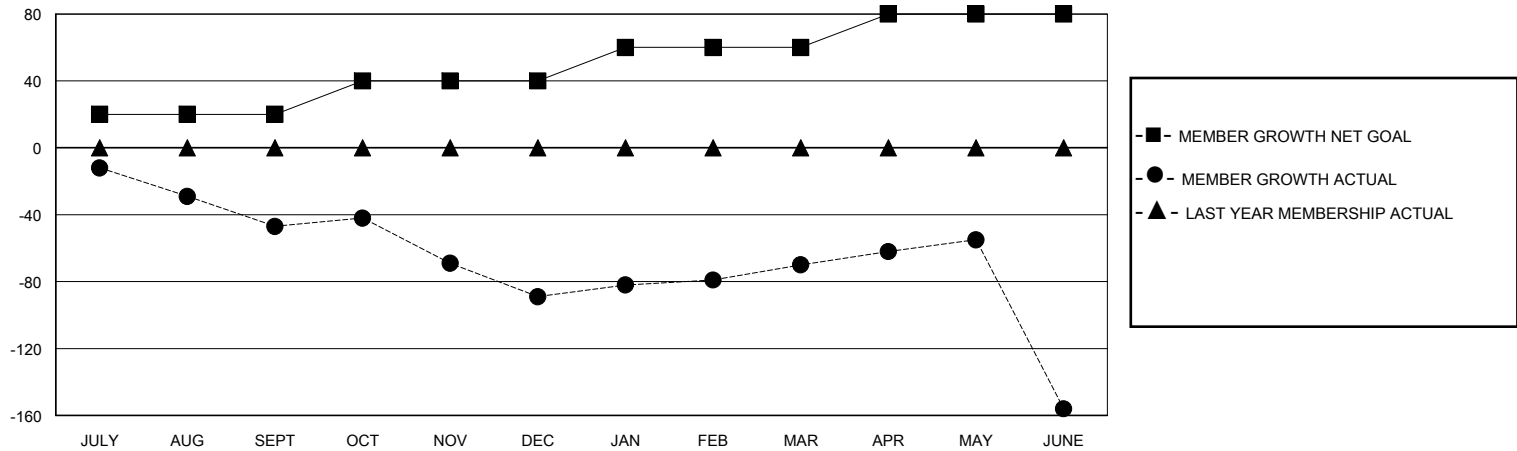
GMT CA

Clubs				Members			
RESULTS FOR 2023-2024				RESULTS FOR 2023-2024			
QUARTER	NEW CLUB GOAL	NEW CLUBS	DROPPED CLUBS	QUARTER	MEMBER GROWTH NET GOAL	MEMBER GROWTH ACTUAL	DROPPED MEMBERS ACTUAL (including transfers)
JULY/AUG/SEPT	0	0	2	JULY/AUG/SEPT	20	70	100
OCT/NOV/DEC	0	0	1	OCT/NOV/DEC	20	46	75
JAN/FEB/MAR	0	0	0	JAN/FEB/MAR	20	50	29
APR/MAY/JUNE	1	0	5	APR/MAY/JUNE	20	52	129

GOALS AND ACTUAL NEW CLUBS CUMULATIVE



GOALS AND ACTUAL MEMBERS CUMULATIVE



DROPPED CLUBS: 8	44 CLUBS OF 69 ADDED 1 OR MORE NEW MEMBERS	GENDER DISTRIBUTION MALE 982 (57.73%) FEMALE 717 (42.15%)
DROPPED MEMBERS DECEASED 24 CLUB CANCELLED 49 OTHER 257 TOTAL 330	CLICK HERE FOR CUMULATIVE MEMBERSHIP DATA	TOTAL FAMILY UNIT MEMBERS 420 FAMILY MEMBERS PAYING HALF DUES 215